

CTH4 560 T4 3kW (278560106)

GENERAL DATA



ROOF FAN, VERTICAL DISCHARGE

MANUFACTURING FEATURES

- Fan made of steel with polyester powder finishing coat.
 - High efficiency backward impeller with self-cleaning system of steel.
 - Standard asynchronous motor with IP-55 protection and Class F insulation.
- Manufactured with standard voltages: 400V 50Hz three phase motors

APPLICATIONS

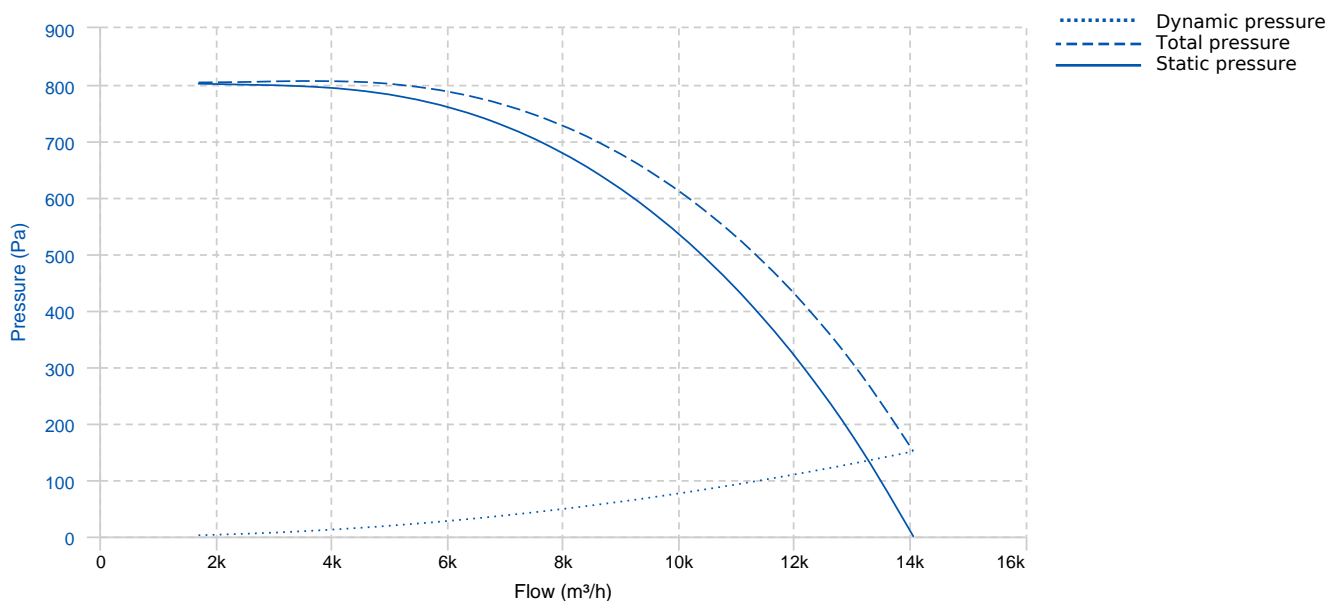
Specially designed for roof installation, with vertical discharge without any additional kit, they are suitable for:

- Smoke extraction
- Air renewal in buildings and industries.
- Industrial and professional kitchen hoods.
- Maximum continuous operation temperature: 80°C (fluide).
- Maximum ambient temperature: 50°C.
- Cinemas.

UNDER REQUEST

- Version made of inox 304/316.
- Finishing C4-C5.
- Special voltages.

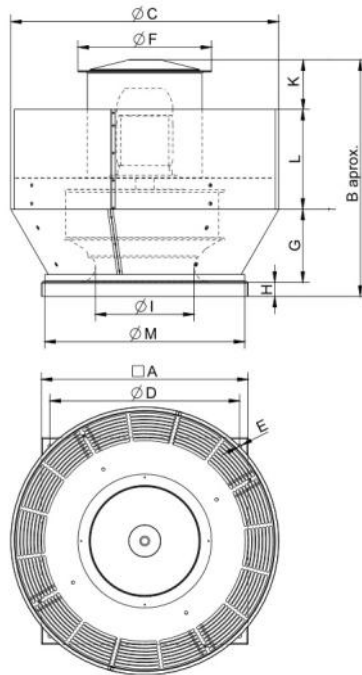
PERFORMANCE CURVE



TECHNICAL DATA

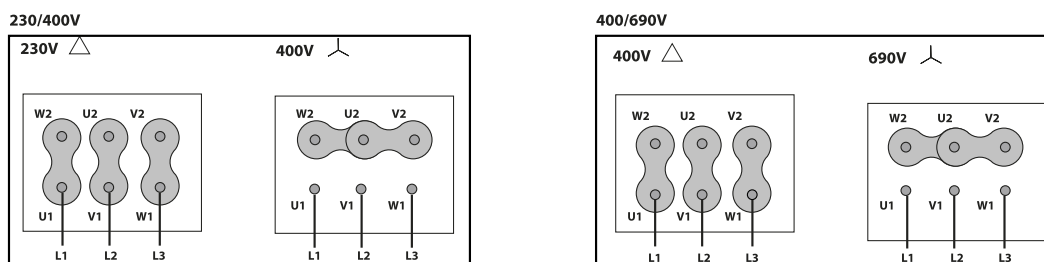
Fan							
RPM	1420	Approx. weight	58 kg	Max. Flow	14060 m ³ /h		
Motor							
Power	3 kW	RPM	1420	I max. (230V)	10,7 A	I max. (400V)	6,17 A
Size	100L	Approx. weight	34 kg	Efficiency (%)	87.7 %	FP	0.82

DIMENSIONS



Dimensions (mm)									
A	730	B	836	D	670	G	258	H	50
K	175	L	353	$\varnothing C$	946.6	$\varnothing E$	14	$\varnothing F$	472
$\varnothing I$	374	$\varnothing M$	706						

WIRING DIAGRAM



ACCESSORIES

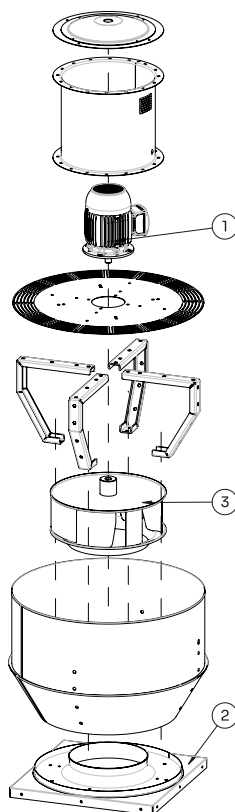


SAFETY SWITCH
INT 25 3P A
REF: INT253PA



FREQUENCY SPEED CONTROLLER
SFC 400 III 8A *
REF: SFC400III8

SPARE PARTS



	Code	Model	Qty
1	721001170	MOTOR 3KW T4 B5 230/400V	x1
3	R-279569382	IMPELLER THRE R63B1 560X160x28 RD	x1